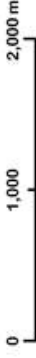


THE 12 PERCENT PROCESS

Proposed Protected Areas Series

Wentworth Valley

6° Universal Transverse Mercator (UTM) Projection, Zone 20 T,
Central Meridian 63°00' West, North American Datum (NAD) 1983,
CSRS 1998.



© Crown Copyright, Province of Nova Scotia, 2013.
All rights reserved.

Key to Proposed Protected Areas

- Conditions Apply to Designation
- Proposed Nature Reserve
- Proposed Wilderness Area
- Proposed Conservation Lands

Key to Selected Features

- Fire Station
- Hospital
- Transmission Line
- Highway or Paved Road
- Unpaved Road
- Track, Trail or Footpath
- Railway
- School
- Police Station
- Pipeline Corridor
- Church
- Other Building
- Building, Structure or Utility
- Existing Protected Lands
- Crown Land
- Restricted Use Area



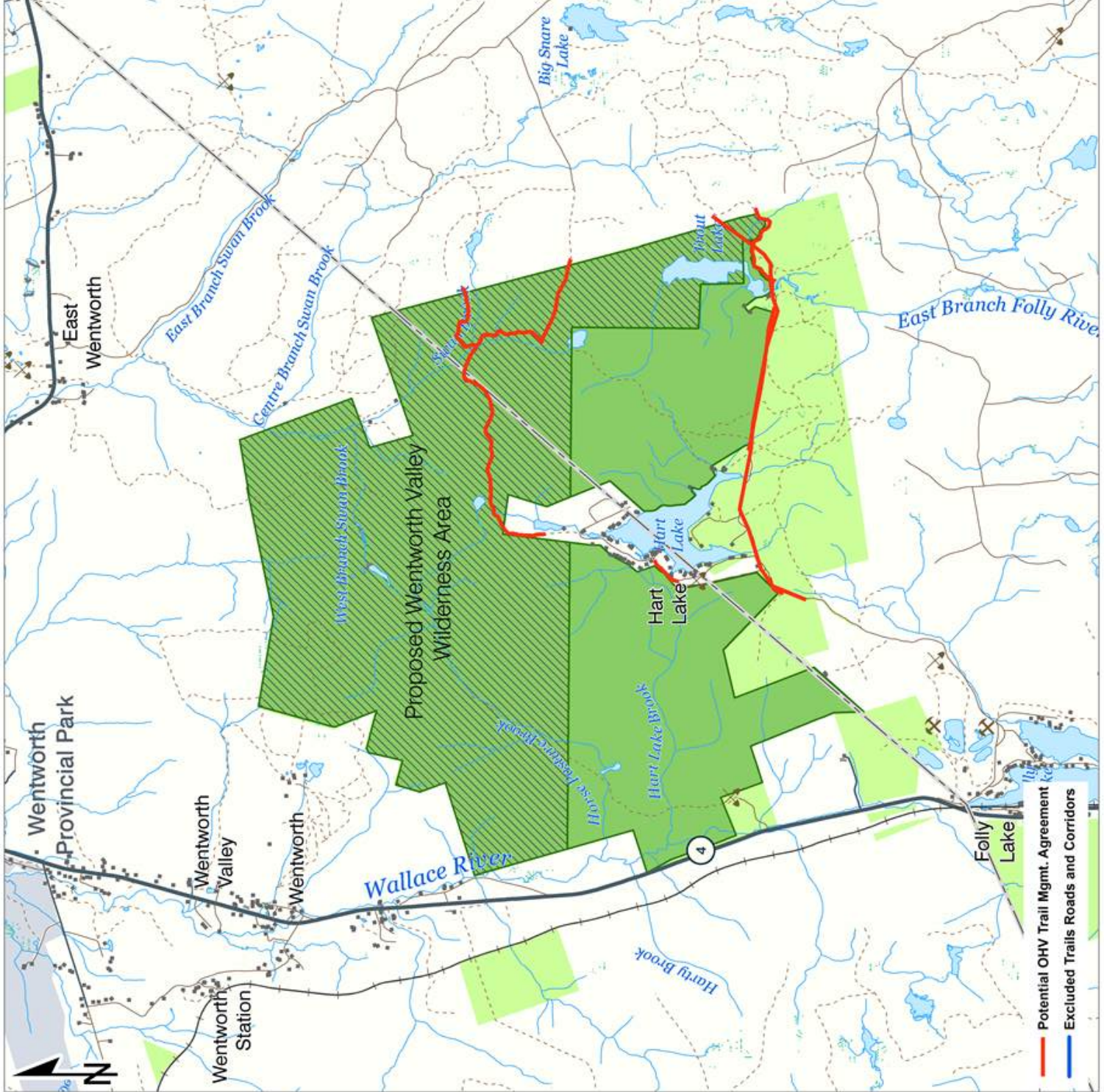
Nova Scotia Key Map

Map produced by the Protected Areas Branch of NS Environment, February 2013. For more information please visit www.gov.ns.ca/foe/proteaa/index.htm

This product contains data from the following sources:

Nova Scotia Topographic Database, 2010 and Nova Scotia Atlas Database, 2001. Obtained courtesy of Service Nova Scotia and Municipal Relations.
Restricted and Limited Use Lands Database and Crown Lands Database. Obtained courtesy of the Nova Scotia Department of Natural Resources.

This map is a geographic representation only and should not be used for legal purposes or navigation. NS Environment accepts no liability for any errors or omissions contained herein.



- Potential OHV Trail Mgmt. Agreement
- Excluded Trails Roads and Corridors